



McLean Art Society

Palette

August 2022

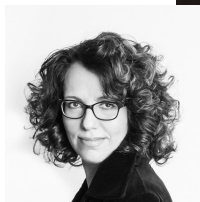
From the president

Enjoy the rest of your summer and get ready for a MAS fall with many paintings and opportunities for displays.

I am looking forward to seeing you all again in September!

Anna

Anna Katalina
President MAS



McLean Art Society Artist of the Month

To become our artist of the month, register on the [website](#)



Gerda Lane



Wine with Pears



Carol Waite



Three Koi



Chisty Kill



Christy with Outerbanks



Jane McLevany Coonce



Duck Donuts



Afternoon Light

MAS News & Notes

McLean Art Society

Meets every 4th Friday of the month starting again in September...see you then!

Spring Hill

One of our favorite places with easy access now planning for a show come this fall.

Dolley Madison Library: Small Treasures

A special opportunity for display and sale of small footprint artwork (max 10x12" with thin frame) in a sealed glass case. Interested?

Oak Marr Recreation Center in Oakton

A new opportunity similar to Spring Hill coming in September as a new venue for us.



McLean Art Society ~ August 2022

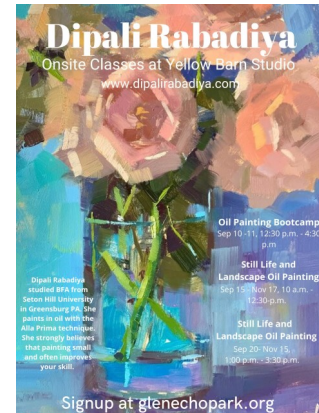
Members Training Artists

From Dipali Rabadiya

I will be teaching at onsite yellow barn studio in Fall 2022. Please see the flyer for more information. If you are interested, signup is available at

www.glenechopark.org

Please let me know if you have any questions.



McLean Project for the Arts (MPA) is having their Artfest again this year, and they have invited us to participate. The date is Sunday, Oct 2 from 10 am to 4 pm.

If you would like to participate, now is the time to apply. Deadline is Wednesday September 7th. MPA wants our work to be juried, so we will have a panel of 3 people from our membership to be anonymous jurors. If you get 2 yes votes, you are in. If none of your paintings are accepted, you can still put in a table top, shrink-wrap and cards.

The board met and here is what each accepted artist can show:

- 2 small or mediums size paintings UNDER 16x20 or 1 large painting that is 16x20. If your painting is bigger than that, you will have to bring a portable easel that you can set your painting on. (Space on the screens we have are limited, so to be fair to everyone, we must be strict about the size limitations.)
- 1 small table top with overall size within 8x10 inches (including frame) or smaller.
- Shrink-wraps
- 8 boxes of cards

Entry fee is \$20 (no commission on sales!) Artists must also work a 2-3 hours shift.

To apply: Send 3 images to Yvonne Leung, our MPA ArtFest Coordinator, at yvonneleungpm@gmail.com . Try to take a picture that makes your painting like a perfect rectangle or square. Try not to include the frame. If you take it with your phone, put it down on the ground, lean over the painting and take the shot. Then go to edit at the top of the screen and crop out the background that is not part of the painting. If you don't know how to do this, go to YouTube and google, "How to crop a photo on my iPhone" or whatever type of phone you have.

Also, send your \$20 check. Make the check out to McLean Art Society and in the note section of the check, write "Art Fest". Mail your check to Yvonne Leung at 1154 Spring Hill Road, McLean, VA 22102.

Once we know how many people plan to participate, then we will know if you can bring more paintings than listed above.



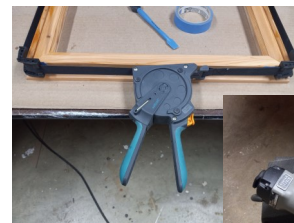
McLean Art Society ~ August 2022

How to Join the Parts of A Frame

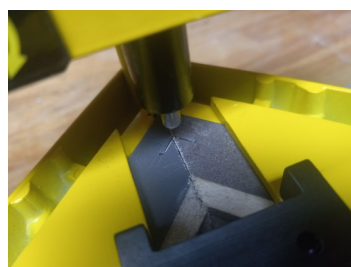
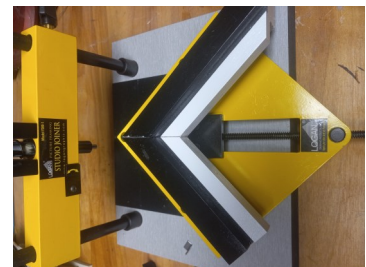
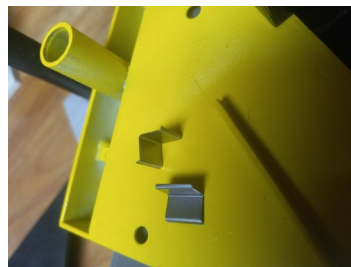
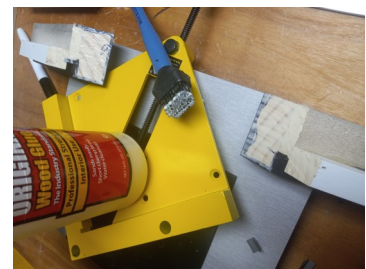
Last month we saw how to make a frame for a painting and prepare it for hanging with a dust cover and wire hanger. In the example, the frame was stained and covered with three coats of polyurethane and so the easiest way to reinforce the corners was to drive two 1.5 inch nails into the corner at right angles to each other. A simple touch up that blended with the rustic rame and we were done!

A more elegant solution is to cut a 45 degree slice out of the side of the frame corner and glue in a separate piece of wood. When dry, you cut off the excess and sand the corner smooth. You can then paint the frame with clear poly or colored paint.

A third way and the only way of the three not visible from the front or side is to drive a small steel corner brace into the backside of the frame. The braces come in two styles: hard wood and soft wood. They are driven into the frame by hand with a tool like shown here or a pneumatic driver like the nail drivers shown here but built for the braces.



The first step is to color the edges in the color of the final frame...in this case black. The corner is then glued and can be bound with blue tape if needed. For small frames two braces are needed. The frame is inserted in the punch and held in place with adjustable guides. The punch is then lowered by hand driving the wedge (one at a time) into the frame. When done the two braces are on the back side and almost invisible.





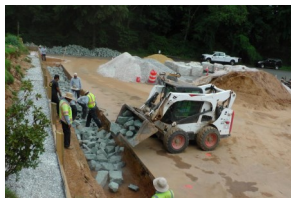
McLean Art Society - August 2022

Members in Action

From Larry Danforth

Landscape design, engineering, and architectural design are art forms that like a painting can vary in beauty in the eye of the beholder. This summer all three art forms came together in a project I have at Walker Chapel UMC. We are replacing a decades old wooden wall around the cemetery with a stone gravity wall. It is called that because it is held in place by its sheer weight...sort of like the pyramids. The art is in the details and is in the layers of stone just like a painting...the surface is what you see, but the layers make it last a thousand years.

The art form of construction intersected with another art form I enjoy...website design. Each week the construction is documented on a website I built as the property manager of the Chapel. There are hundreds of photos and even some videos that document the project's construction...now only in its fifth week of fifteen.



See all the phases of the Historic Cemetery Project at

<https://www.wcpmit.org/hcp01>

where digital art is another art form to enjoy!



HCP

Historic
Cemetery
Project



Artist's rendition of the final retaining wall, staircase, and columbaria



McLean Art Society - August 2022

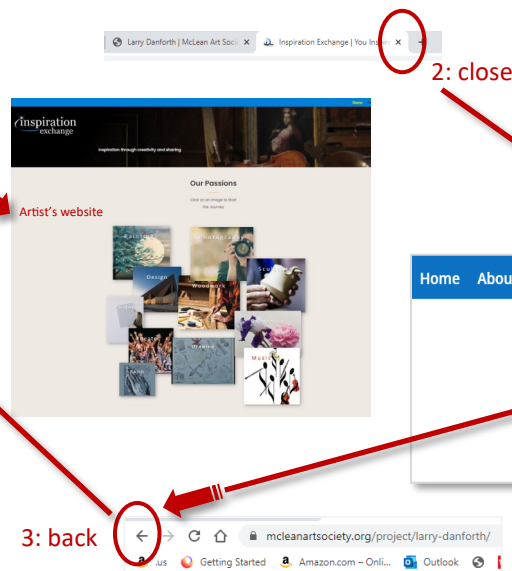
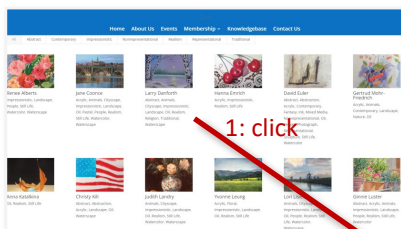
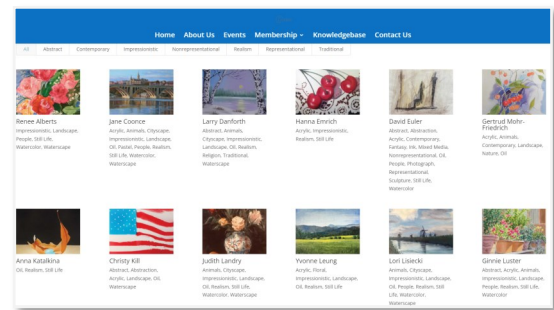
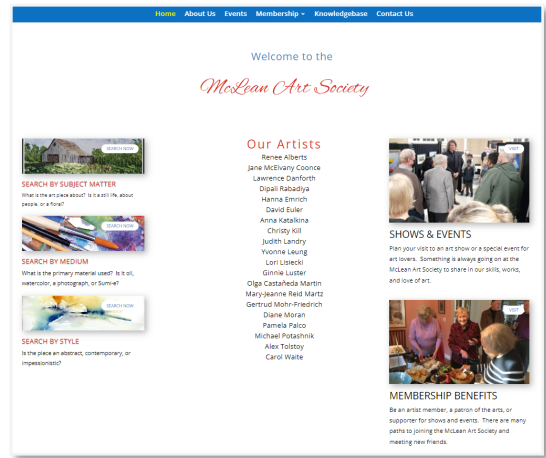
PUT YOUR OWN WEBSITE ON THE MAS WEBSITE

Keeping one website current is a never ending task. Keeping two websites current and synchronized violates a basic data fact that information kept in two places will always be different.

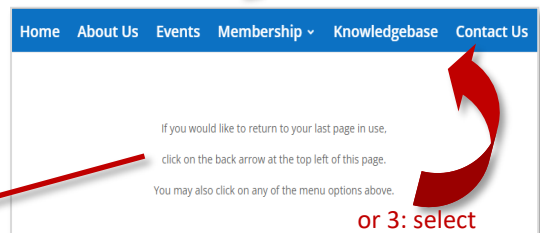
There are two ways visitors get to your personal gallery in the MAS website. One is by clicking on your name in the list in the middle of the home page and the other is by clicking on your sample painting in one of the search screens. Both take the visitor to your gallery inside the MAS website.

It is now possible to substitute your existing website for the MAS gallery. The name-list can now open your website in a new tab. When the visitor closes the tab, the MAS site is still visible and sitting on the home page.

The search pages will send the visitor to your MAS gallery but that page will now automatically bounce the visitor to your website in a new tab. When the visitor closes the tab, they are on the gallery page but can either use the back button at the top of the browser to go back into the search where they left off or click on any menu option to continue.



Try it out using Lawrence Danforth as a test and let us know if you would like this for your website!





McLean Art Society ~ August 2022

Our Board

MAS Executive Board

2022-2023

President – Anna Katalina

Vice President – Sandra Hill

Secretary – Carol Waite

Treasurer – Judy Landry

Chairs

Directory – Hanna Emrich and Lori Lisiecki

Email distribution – Lori Lisiecki

Facebook – Anna Karalkina

Hospitality – Hanna Emrich

Instagram – Anna Karalkina

Membership – Lori Lisiecki

Name Tags – Diane Moran

Newsletter – Larry Danforth

Parliamentarian – Mary Jeanne Martz

Patron's List – Yvonne Leung

Program Coordinator – Dipali Rabadiya

Publicity – Volunteer Needed!!!!

State Agent – Ginger Sanaie

Venues

Oak Marr – Margaret Raymond

Spring Hill – Carol Higgs and Carol Milton

'Westover Library – Bill and Betty Dunn

Dolley Madison Libraray – Olga Martin

MPA/TD Bank – Hanna Emrich and Vicky Wilken

Volunteer Coordinator – Jane Coonce

Webmaster – Larry Danforth

At Large Members – Ginnie Luster and Vicky Wilken

INSTAGRAM PAGE:

<https://www.instagram.com/mcleanartsociety/>

You should be able to view it from any browser, but to see our page fully, you may need to have an Instagram account. If so, just go to www.instagram.com to sign up.

Here is a link to a YouTube video that is very helpful in getting started:

<https://m.youtube.com/watch?v=no55N1sHjT8>

FACEBOOK PAGE:

The page is called McLean Art Society.

Click [HERE](#) to view the page.

To sign up with a new account, go to facebook.com and click on **Create New Account**. Enter your name, email or mobile phone number, password, date of birth and gender. Then click on **Sign Up**. To finish creating your account, you need to confirm your email or mobile phone number.

The Mclean Art Society Palette

The Palette newsletter is a monthly production of the McLean Art Society and while intended for the active members and sponsors of the Society, distribution is unrestricted and unrecorded. All stories and artwork are printed with permission of the artist. All content is ©Copyright protected by the McLean Art Society and individual works are ©Copyright protected by the artist. No reproduction of any artwork is permitted with the express permission of both the McLean Art Society and the artist that created the work. Your cooperation is appreciated.